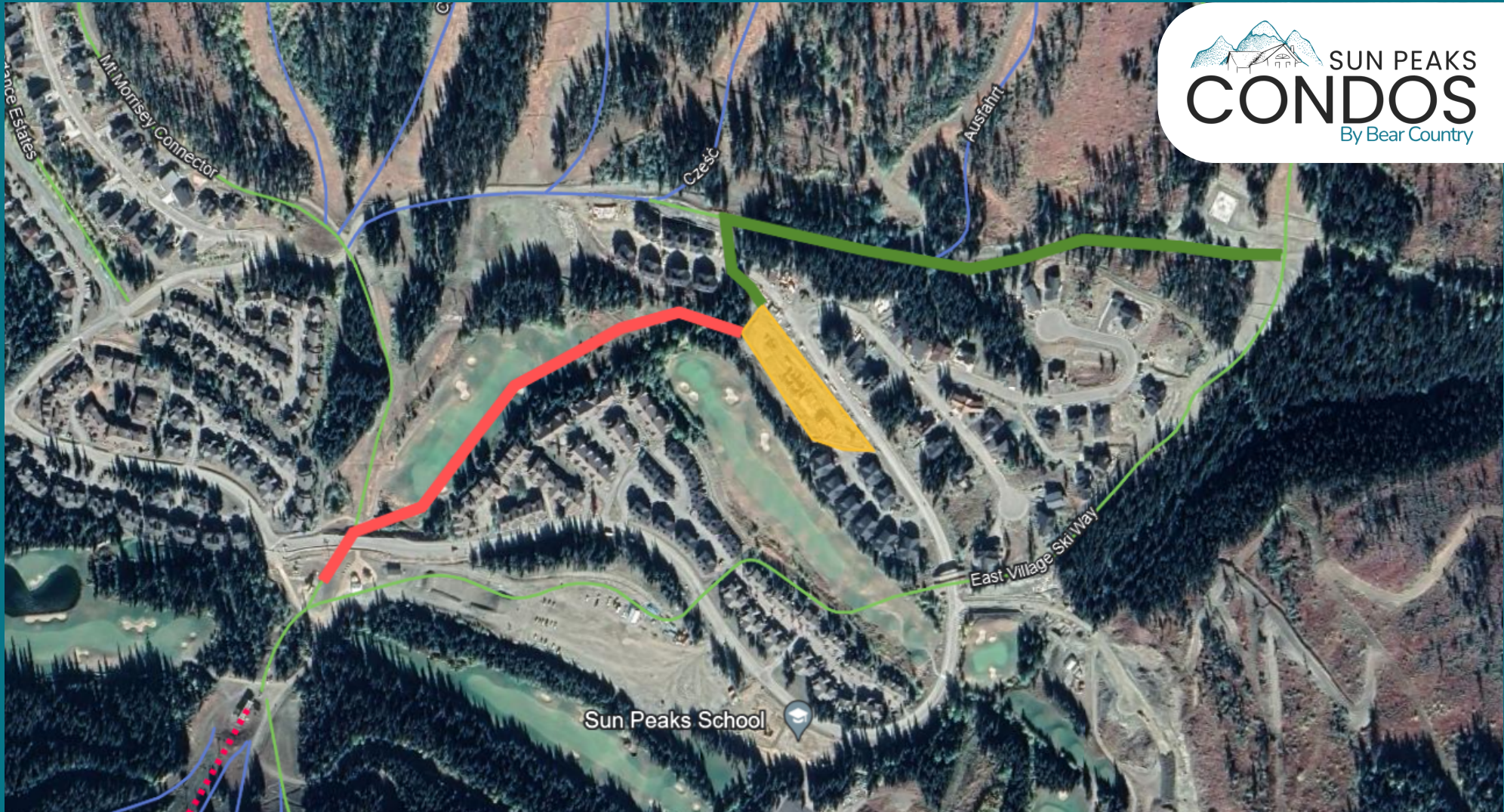


# POWDER HEIGHTS

# SKI MAP



## Ski-Out

Exit the complex from the west side onto the groomed trail. Follow onto the 'Mnt Morrisey Connector'. This will lead you to The Orient and Morrisey Chairlift.

## Ski-In

Once on 'East Village Ski Way', take the hard right exit at the fork to continue. When you see The sign for 'Powder Heights' exit left, cross the road and enter the complex